

Ready for Any Condition

Hoymiles solution delivers reliable, climate-proof performance that powers your home for years without ever disturbing your daily life.



IP66

Waterproof & Dustproof

-25°C~65°C

Operation temperature

35dB

Quiet operation

User-Friendly Installation

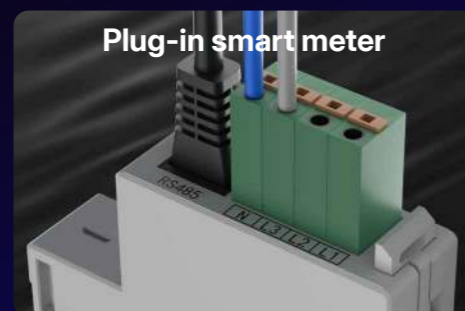
The system requires no complex tools and uses a plug-and-play setup for speed and minimized on-site labor.



Pluggable data transfer stick



Spring terminal design



Plug-in smart meter

Technical Specs



HYBRID INVERTER
HIS-(3-6)L-G3S

Model	HIS-6L-G3
Battery	
Battery type	Li-ion/Lead-acid
Battery voltage range (V)	40-60
Max. charge/discharge current (A)	135/135
General	
Dimensions (W*H*D [mm])	506*495*99
Weight (kg)	17
Operating temperature (°C)	-25 to +65 (>45, derating)
Protection degree	IP66
PV Input	
Max. PV power (W)	12000
Start-up voltage (V)	100
MPPT voltage range (V)	90-500
Max. input current (A)	18/18
MPPT number/Max. input strings number	2/2
AC Output	
Max. on-grid output apparent power (VA)	6600
Max. Continuous AC Pass through current (A)	50
Max. off-grid output apparent power (VA)	12000, 10s
Back-up switch time (ms)	0

About Hoymiles

Founded in 2012, Hoymiles has been dedicated to advancing clean energy technology. As a global leader in smart energy solutions, we provide efficient and reliable PV and energy storage systems for diverse applications — from DIY and residential to C&I and large-scale projects.

With over 1,900 employees, more than 35% in R&D, we drive continuous innovation that powers customers in over 190 countries.

Guided by the mission Open Energy for All, Hoymiles drives solar adoption through continuous innovation and global strategy, building a greener and more sustainable future.

service@hoymiles.com
support.hoymiles.com/hc/en-001



Hoymiles

HOYMILES RESIDENTIAL HYBRID INVERTER

High Performance · Intelligent Control · Sleek Design

HIS-(3-6)L-G3S



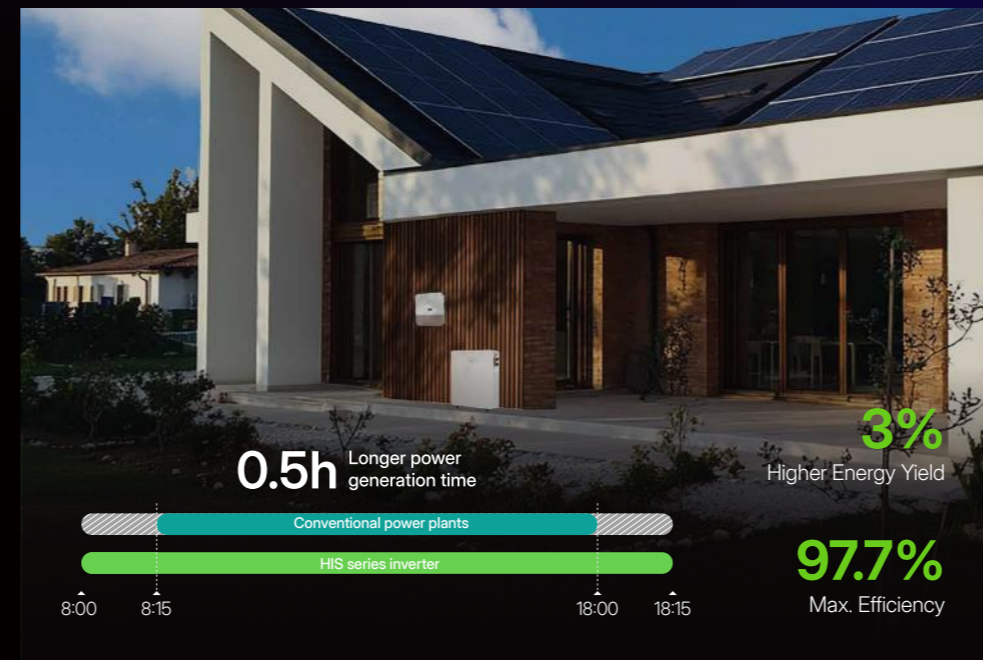
Ultra-Slim Design

Blending perfectly with any home setting, it delivers a lighter, easier installation experience.



Ultra-Powerful Performance

100V low start-up voltage—generate earlier, last longer, and harvest more energy throughout the day.



End Energy Anxiety

HIS powers your biggest appliances with ease. With double the solar input, you'll capture and store every bit of surplus energy.



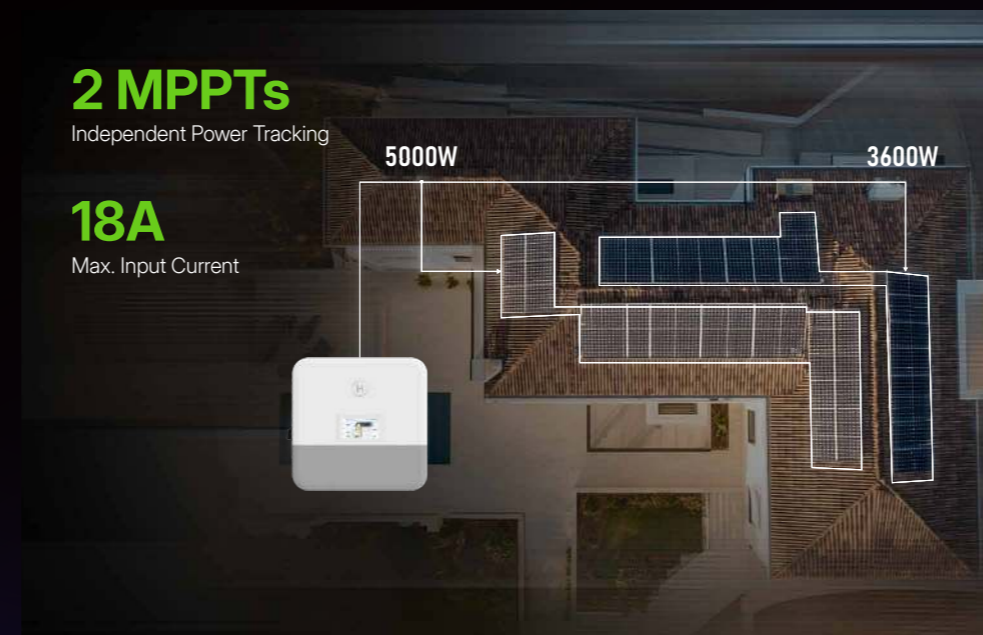
Visual Energy Dashboard

Turns abstract parameters into dynamic, real-time energy flows (PV, Load, Battery), making system status instantly understandable.



Maximize Every Rooftop

Connect more panels. Power bigger modules. Get more from every rooftop.



Power Without Interruption

Zero-millisecond switching makes blackouts invisible - a silent guardian, always keeping your world bright.

